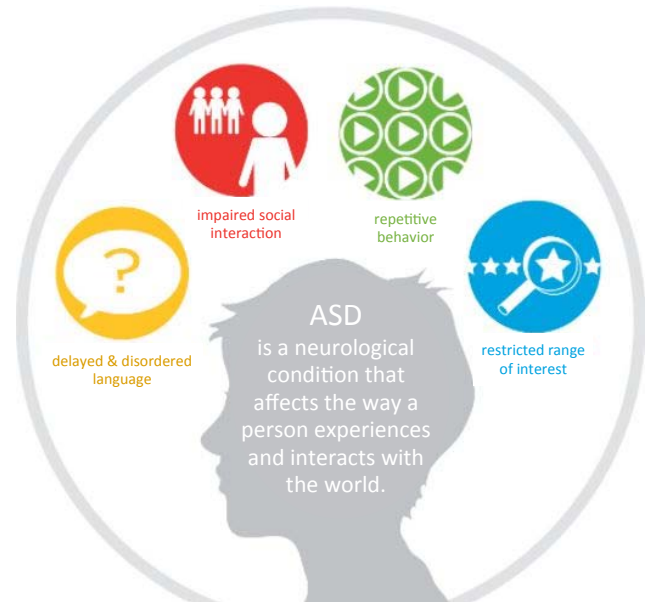


AUTISM FACTS

WHAT IS AUTISM?

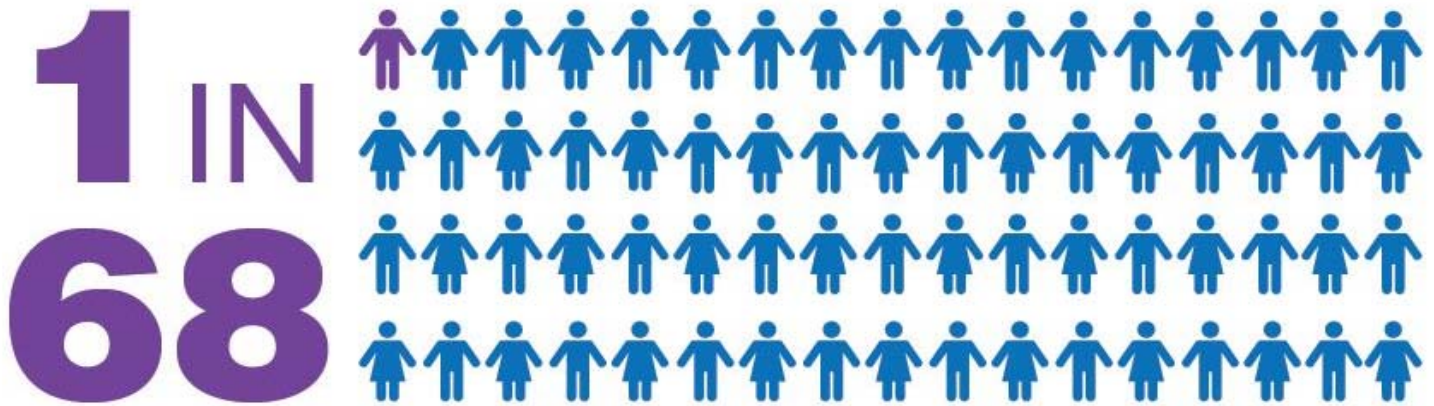
Autism spectrum disorder (ASD) is a neurologically-based condition with no single known cause that affects individuals in different ways and can range from mild to severe.

Children with autism have difficulties communicating and interacting with others, limited imaginative play, and behavioral symptoms including repetitive behaviors and/or a limited range of interests and activities. Approximately 70% of children with autism spectrum disorder also experience other psychiatric conditions - most often attention deficit hyperactivity disorder, anxiety, and behavioral disorders. The myriad of behavioral challenges a child with autism spectrum disorder may pose to the family, school and community can be devastating.



PREVALENCE

The Centers for Disease Control and Prevention (CDC) estimates that **1 in 68 children will be identified with ASD** in the United States.



ASD is almost **five times more common among boys** than girls: 1 in 42 boys versus 1 in 189 girls.



ASD is reported to occur in all racial, ethnic, and socioeconomic groups. However, white children are more likely to be identified with ASD than black or Hispanic children.

1.2x MORE LIKELY among white vs black children

1.5x MORE LIKELY among white vs Hispanic children

1.3x MORE LIKELY among black vs Hispanic children

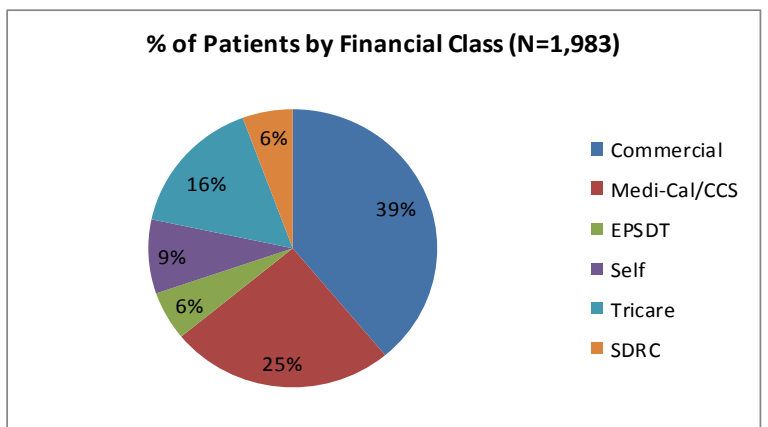
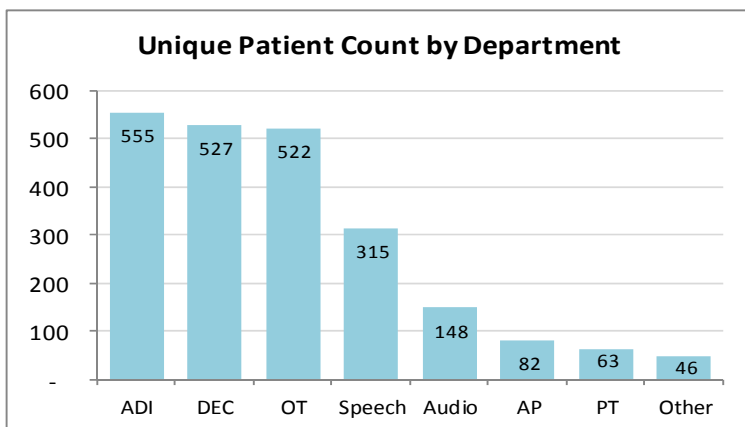
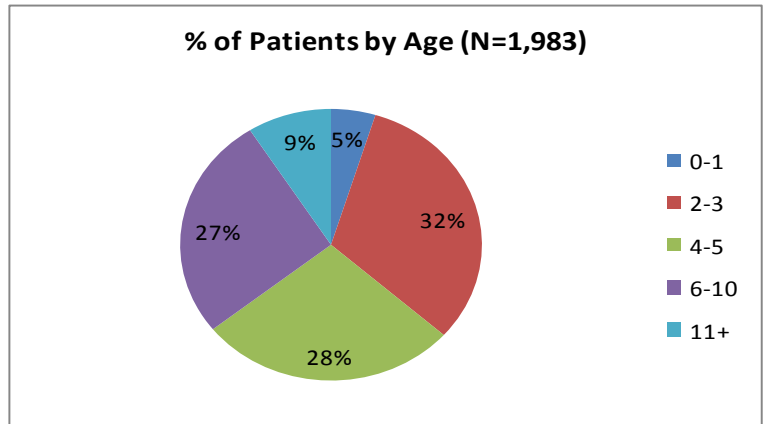
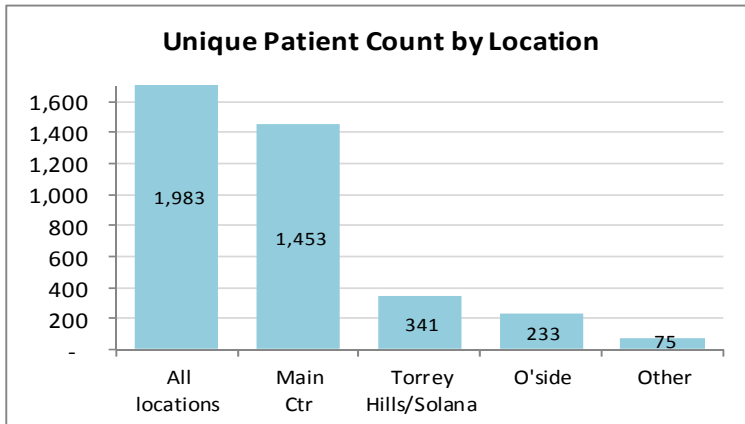
DEVELOPMENTAL SERVICES AUTISM STATS

SERVICES

In Developmental Services, we offer comprehensive diagnostic evaluations by expert psychologists, an empirically based parent training model of intervention, social skills groups, cognitive behavioral therapy, speech, physical and occupational therapies and Alexa's PLAYC (Playful Learning Academy for Young Children), a unique early education inclusion program for children with autism spectrum disorders and typically developing children.

FY17 VOLUME DATA

A total of 1,983 children at-risk for ASD (autism spectrum disorder) or with a diagnosis of ASD or PDD-NOS (pervasive developmental disorder, not otherwise specified) were seen in Developmental Services in FY17.



RESEARCH

We collaborate with researchers and clinicians at UC San Diego, SDSU, The MIND Institute at UC Davis, Rady Children's Institute for Genomic Medicine and the community to provide world-class, cutting edge research and evidence-based, comprehensive care that will improve the lives of children with autism spectrum disorders.

Projects conducted in Autism Discovery Institute (ADI) Clinical Services:

- Examining the Effectiveness of a Community-Based Inclusion Preschool Program for Children with ASD (PI: Jobin, RCHSD)
- Child Evaluation Enhancement Project (CEEP) (PI: Haine-Schlagel, SDSU)
- Multimodal Imaging of Early Neural Signature in Autism Spectrum Disorder (PI: Fishman, SDSU; Site PI: Carr)



Projects conducted in the Child and Adolescent Services Research Center (CASRC):

- Exploring Multi-Level System Factors Facilitating Educator Training and Implementation of Evidence-Based Practices (PI: Stahmer, UC Davis; Suhrheinrich, SDSU)
- Adapting and Implementing an Integrated Care Model for Youth with Autism Spectrum Disorder and Psychiatric Comorbidity (PI: Stadnick, UCSD)
- High School Success: Vocational Soft Skills Program for Transition-Age ASD Youth (PI: Baker-Ericzén, RCHSD)
- Effectiveness of a Multi-Level Implementation Strategy for ASD Interventions (PIs: Brookman-Fraze; Stahmer)
- Leadership for Evidence-based Autism Programs in Schools (LEAPS) Project (PI: Suhrheinrich, SDSU)
- Optimization of Fidelity Procedures for Pivotal Response Training (PIs: Stahmer, UC Davis; Brookman-Fraze, UCSD; Suhrheinrich, SDSU)
- Developing a Program for Increasing "Soft Skills" for Young Adults with Autism Spectrum Disorders: College Success (PI: Baker-Ericzén, RCHSD)
- Cognitive Behavioral Intervention for Driving (CBID) for Individuals with ASD (PI: Baker-Ericzén, RCHSD)