



Quality Assessment and Performance Improvement (QAPI) Initiative

Rady Children's is committed to delivering the highest quality care and services to our patients and their families.

This dedication is illustrated through our collaboration with the Children's Hospitals' Solutions for Patient Safety Network as we aim to eliminate all preventable harm at Rady Children's and at children's hospitals across the United States.

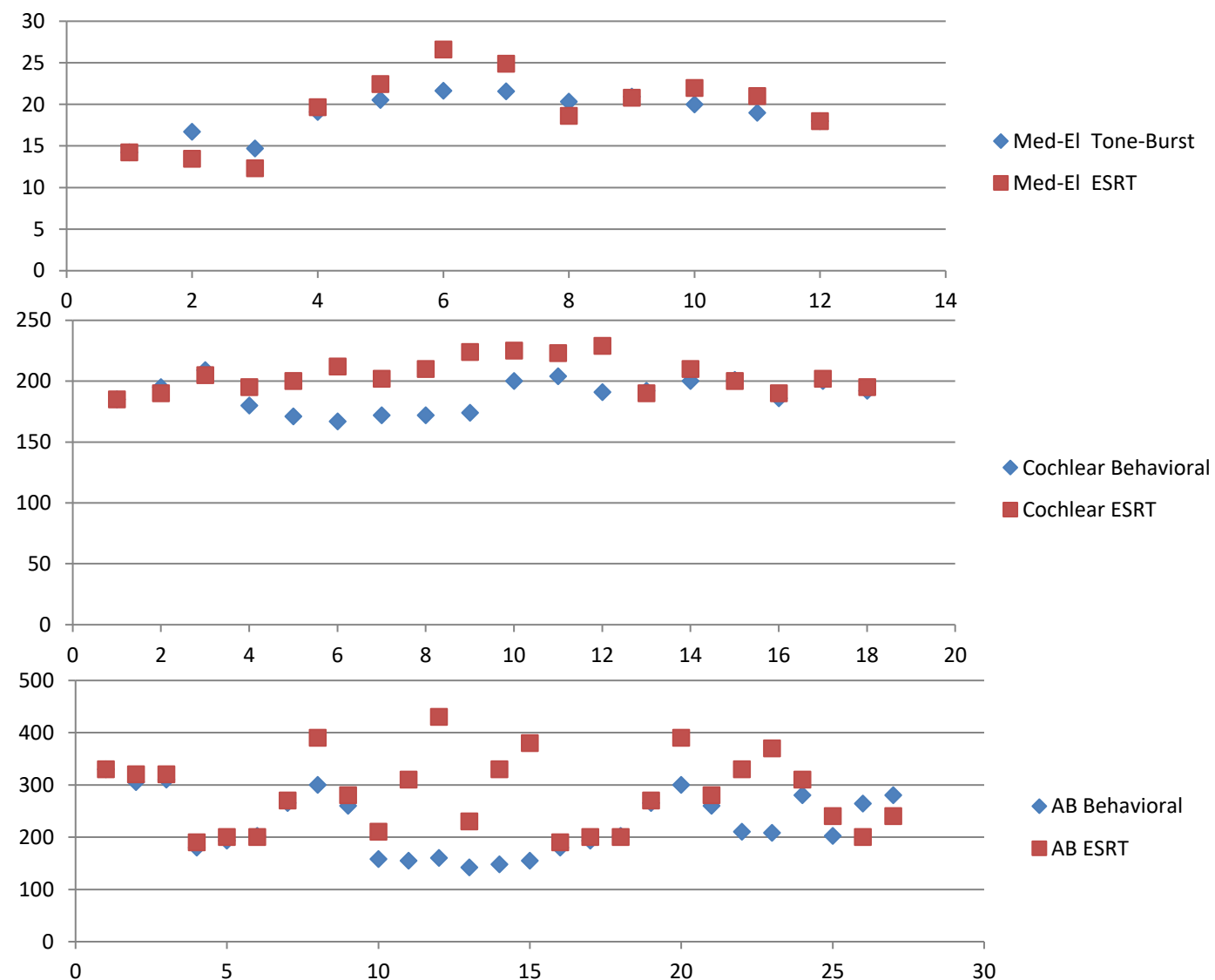
To achieve our clinical quality and safety goals, we use a systematic, comprehensive, data-driven, proactive approach that allows us to make continuous improvements in the quality and safety of care and services we provide.

Description of QAPI Initiative:
By July 1, 2016, we will determine the statistical correlation between comfort levels obtained via subjective behavioral measurements (tone burst) and objective electrical stapedial reflex thresholds (ESRT) in cochlear implant recipients.

Important to our patient population because:
To accurately map cochlear implants of all manufacturers in populations that cannot reliably complete behavioral measurements.

This initiative AIMS to achieve the following goal(s):
Improve patient care by using objective measures for cochlear implant mapping as subjective measures can be unreliable for a portion of the cochlear implant recipient population.

Data:



Focused interventions include:

All cochlear implant audiologists were given a procedure to follow with the methods for the study. This was to be followed at all mapping appointments with children that were developmentally capable of completing both the objective and behavioral measurements.

What does this data tell us?

Based on minimal subjects there was correlation with the Med-El manufacturer, no correlation with the Cochlear or Advanced Bionic manufacturers.

Our next steps include:

Continue to collect data and increase the subject size. There is also research to suggest that speech burst stimulus has better correlation than the tone burst stimulus for Advanced Bionics devices.