

## **PROGRAM GOAL**

To train post-doctoral fellows to become proficient in assessment, differential diagnosis, and clinical formulation of children ages birth-6 years with complex diagnostic presentations.

## **TRAINING OBJECTIVES**

- 1.) Exposure to wide variety of developmental, early mental health/behavioral, medical conditions, and family systems through participation in professional development opportunities.
- 2.) Develop independent assessment skills using empirically supported measures.
  - a. Demonstrate understanding of typical vs. atypical early childhood development.
  - b. Demonstrate understanding & consistent use of a trauma-informed approach.
- 3.) Develop competencies interviewing and feedback.
  - a. Demonstrate engagement skills and cultural sensitivity with parents/caregivers throughout the assessment process.
  - b. Learn to give difficult feedback to families.
- 4.) Learn to document and write comprehensive reports in accordance with regulatory guidelines.
- 5.) Learn to collaborate with related disciplines

## **UNIQUE TRAINING ACTIVITIES**

- Obtain competencies in ADOS 2 modules
- Exposure to children with complex trauma and early mental health concerns
- Infant assessment (birth-2 years)
- Exposure to medically fragile and genetically complex presentations
- Opportunities for collaboration with broad spectrum of professionals working in early intervention.



**Want to be part of our mission of delivering outstanding care to every child? Apply Now!**

**Developmental Evaluation Clinic**  
Training Director,  
Meghan Lukasik, PhD  
mlukasik@rchsd.org  
Phone: (858) 966-1700  
ext. 247286

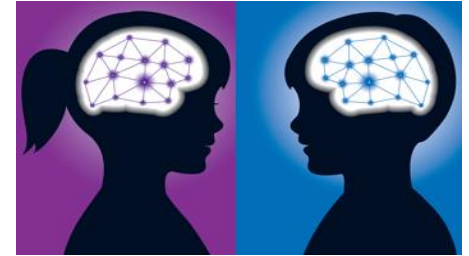
**To Apply:**  
**<https://jobs.rchsd.org/>**

**Position Name:**  
**Postdoctoral Fellow**

**3 positions**

**FOR MORE INFO**  
**VISIT DEC'S WEBSITE**

**<https://www.rchsd.org/programs-services/developmental-evaluation-clinic/>**



**Developmental  
Evaluation Clinic  
Post-Doctoral  
Fellowship Program  
2025-2026**



**Developmental  
Evaluation  
Clinic**

## PROGRAM COMPONENTS

### GLOBAL DEVELOPMENT

- Cognitive/Language/Motor/Adaptive
- Slow Development
- Kindergarten Readiness (aged 4-5 years)

### INFANT ASSESSMENT

- Premature Birth / Neonatal Complications
- In-Utero Exposure to Tobacco, Alcohol, and Other Substances

### SOCIAL COMMUNICATION DISORDERS

- Autism Spectrum Disorder
- Communication/Social Skills
- Restrictive/Repetitive/Atypical Behaviors

### CHILD WELFARE & ADOPTION SERVICES

- Complex Trauma & Development
- Local & International Adoptions
- Caregiver-Child Attachment

### EARLY MENTAL HEALTH CONCERNS

- Social-Emotional and Behavioral Concerns
- Differential Diagnosis (Autism vs. other Psychiatric Concerns)
- Caregiver-Child Attachment
- Trauma-Informed Assessment

### ADHD

- Inattention/Sustained Attention
- Hyperactivity/Impulsivity
- Social Skills Difficulties

### LEARNING/ACADEMIC CONCERNS

- Reading/Written Expression
- Mathematics
- Nonverbal Learning Disorder

### NEUROBEHAVIORAL CONCERNS

- Planning/Organization/Inhibition
- Cognitive Flexibility/Shifting
- Self-Monitoring

### NEUROPSYCHOLOGY EVALUATIONS

- Brain Tumor/Radiation/Chemotherapy
- Complex medical conditions
- Concussion/Traumatic Brain Injury

## ***Rady Children's Hospital*** **Developmental Evaluation Clinic**

### **JOB SUMMARY**

Position includes working under the close supervision of a licensed psychologist with the goal of independent administration, scoring, and interpretation of psychological testing for children and adolescents. Under supervision, the post-doctoral fellow develops recommendations for treatment and links children to educational and therapeutic services. Other duties include counseling families regarding assessment findings and referrals. Test administration is based on an understanding of age, culture, and developmental level. The post-doctoral fellow documents patient care in the clinical record according to regulatory agency guidelines. Includes collaborative work with pediatricians and community organizations.

### **MINIMUM QUALIFICATIONS:**

- Doctorate Degree in Psychology
- 1 year of experience with clinical assessment of children, preferably testing children under age 6 year
- Clinical exposure to children with autism spectrum disorders
- Educational background in diagnostic assessments
- APA accredited doctoral program & internship (preferred)
- Bilingual/Spanish (preferred)

## **WHERE WE ARE**

### **San Diego & Riverside Counties CALIFORNIA**



3665 Kearny Villa Road,  
San Diego, CA 92123



3605 Vista Way,  
Oceanside, CA 92056



11732 El Camino Real,  
San Diego, CA 92130



333 H Street  
Chula Vista, CA 91910



25170 Hancock Avenue  
Murrieta, CA 92562